



# SPOTLIGHTS ON THE HILL

## IN THIS ISSUE:

- Spotlights on the Hill
  - Grad Fair, Advisor Meetings
- Upcoming Events
- Student Support Resources
- Campus Connections

## WKU Grad Fair

FALL 2025 GRADUATES ONLY

Downing Student Union, 3<sup>rd</sup> floor  
Rooms 3023-3025


**Oct. 29<sup>th</sup> & 30<sup>th</sup>**

**10:00 - 6:00**

### BRING YOUR WKU ID!

- ☐ Pick up Cap and Gown
- ☐ Know Where to Go
- ☐ Capture the Moment
- ☐ Mark Your Milestone



 <https://colleges.herffjones.com/college/wku/>

Submit an order for regalia via the  
[Herff Jones site](#) prior to pickup.

After Grad Fair ends, graduates can  
pickup regalia at the WKU Store.



#ClimbWithUs

## CONNECTING TO RESOURCES



Student Resource Portal

## ADVISOR MEETING SCHEDULED?

- ZOOM, PHONE, OR IN PERSON
- DISCUSS CHANGES TO YOUR MAJOR, MINOR, OR YOUR GPA

Register for online courses early!!

**WKU**  
Online

**WKU**  
Online  
ONLINE  
STUDENT  
SERVICES

- Academic Student Success Coaching
- On Demand courses
- Distance Learning Testing Center

Walk through of essential  
campus resources available in  
person and online.

# UPCOMING EVENTS



## Register for WINTER 2026

**10.13.2025**

- open for all students
- does not require advising prior to registration, although it's strongly advised

### IN THIS ISSUE:

- Spotlights on the Hill
  - Grad Fair, Advisor Meetings
- Upcoming Events
- Student Support Resources
- Campus Connections

## EVENTS

[Campus Recreation and Wellness Calendar](#)

[WKU Events Calendar](#)

[WKU Sports Calendar](#)

[Fall 2025 Academic Calendar](#)

[Registration Guides](#)

## Spring 2026

### Priority Registration Dates

**10/20**

Graduate Students, Seniors,  
Post-Baccalaureate students  
• 90 or more earned hours

**10/21**

Special Groups  
• Tier 1 and Tier 2

**10/23**

Juniors  
• 60-89 earned hours

**10/27**

Sophomores  
• 30-59 earned hours

**10/28**

Returning Freshmen  
• 0-29 earned hours

### UPCOMING EVENTS

#### October

- 10/6 to 10/7- Fall Break (university closed)
- 10/13- 2<sup>nd</sup> bi-term begins
- 10/13- Priority Registration Winter 2026
- 10/20- Priority Registration begins for Spring 2026
- 10/29- last day to withdraw with a "W"



 <https://my.wku.edu>

#### Tired of multiple log ins?

You can use your NetID to log in one time to [myWKU](#) to have one click access.

# STUDENT SUPPORT RESOURCES

## IN THIS ISSUE:

- Spotlights on the Hill
  - Grad Fair, Advisor Meetings
- Upcoming Events
- Student Support Resources
- Campus Connections

## Prepping for Midterms

create a midterm study plan and find a study environment where you can focus

mix up your study methods (flash cards, study partners, rereading notes/textbook, teach content to someone)

take breaks away from studying to give your brain time to recuperate

2

4

6

1

3

5

use prior exams, quizzes or professor-provided study guides

don't skimp on sleep or proper nutrition

give yourself grace and appreciate the small wins

270-725-3028  
ONLINE.SUCCESS@WKU.EDU



WKU.EDU/ONLINE/COACHING/

# WKU

  
**C.A.R.E.S.**
**WKU**  
**Online** | **ONLINE STUDENT SERVICES**

Coaching for  
Academic Readiness,  
Excellence, and Success



@WKUOnlineStudentServices

Need helpful resources and support to thrive as an online WKU student? Our YouTube channel is here to guide you every step of the way, offering tips and advice to help you succeed!

We'd love for you to be a part of our community—click the link to subscribe and stay connected!

[youtube.com/@WKUOnlineStudentServices](https://youtube.com/@WKUOnlineStudentServices)

Last Day to Drop with a "W"

# OCT. 29TH

### Reflect

Reflect on progress in each course.

Are you where you want to be?

### Clear Understanding

Do you have a clear picture of current grades?

Do you understand the expectations from professors?

### Protect GPA

Will pushing through lead to successful completion?

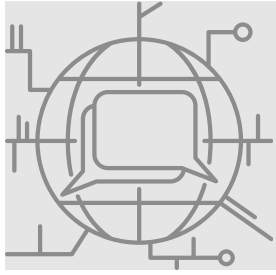
Will dropping a course help protect your GPA?

### Support

If you need support, we're here to guide you.  
Don't hesitate to reach out.

**WKU**  
**Online** | **ONLINE STUDENT SERVICES**



# CAMPUS CONNECTIONS

## IN THIS ISSUE:

- Spotlights on the Hill
  - Grad Fair, Advisor Meetings
- Upcoming Events
- Student Support Resources
- Campus Connections



Are you a first generation college student? You're invited to take part in the WKU First Gen initiative. Use Sutable to help build your story as a WKU student on the hill and beyond. Top 20 students can earn a \$250 completion award!



**Earn points and build your  
portfolio with Sutable!**

To begin, scan the QR, download the app.



Sign in with your Toppermail and password.

Choose a dashboard:

- **Toppers Climb** for activities presented by academic departments, Honors, Advising, Career Development, and more.
- **Toppers Life** for activities presented by Housing & Residence Life, Student Activities, Student Organizations, TRIO Programs, and Campus Rec & Wellness
- Once your app is set up, you can switch between dashboards at any time using the menu in the upper left of your screen.

Allow camera access so you can scan QR codes at events.

Enable Notifications to hear about upcoming events, incentives, and more.



Scan this QR for more details and instructions including how-to videos!



**MAKE IT COUNT  
workshop  
w/ First Gen Advocate,  
Lindsey Houchin**

## THE ART OF *connecting*

You've heard "it's who you know" that matters, but how do you find them?

Whether linking up with peers or finding a mentor who gets you, we've got the scoop on creating meaningful connections that matter.

Learn how to start conversations, drop standout intros, and turn casual chats into lasting opportunities that'll boost your college experience and beyond!

Friday, Oct. 10th

11:30 am

DSU 2025  
The Career Studio

**Win a  
Spencers Coffee  
Gift Card**

Scan to See this  
Event and RSVP in  
Sutable



## UNLOCK YOUR FIRST-GEN POWER

## WKU FIRST GENERATION LEADERSHIP CONFERENCE

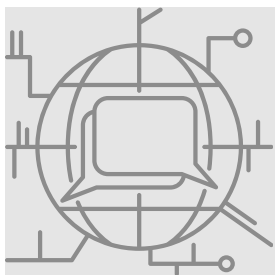
**NOVEMBER 14 AND 15**

CLAIM IT. OWN IT. LEAD WITH IT.



**F1rstGen: Make It  
Count! Fall 2025**





# CAMPUS CONNECTIONS

## IN THIS ISSUE:

- Spotlights on the Hill
  - Grad Fair, Advisor Meetings
- Upcoming Events
- Student Support Resources
- Campus Connections

## NOTE FROM THE DEAN

I want to take a moment to encourage you as we move further into the semester. Even though you may not be on campus each day, you are a vital part of our GFCB family. I invite you to take advantage of upcoming opportunities like **Business and Professionalism Week**, where you can connect virtually to gain valuable insights, network, and prepare for your future career.

Please also remember that resources such as **tutoring services, academic support, and career development tools** are available to you no matter where you are studying. We are here to support your success every step of the way.

Stay motivated, stay engaged, and keep pushing forward—you belong at GFCB!

With encouragement,  
Dr. Evelyn Thrasher

*Evelyn N. Thrasher*

Dean, Gordon Ford College of Business



PLEASE JOIN US

## AI IN REAL LIFE

Embracing the future.

Presentation and  
moderated panel discussion.



Thursday at 3 PM  
23 October 2025



National Corvette Museum  
350 Corvette Dr.

### Speakers



**Dr. Thad Crews**  
Presenter & Panelist



**Dr. Whitney Peake**  
Panelist



**Dr. Mark Ciampa**  
Panelist

### Why This Matters

This event helps people move beyond fear and uncertainty surrounding AI through real-life examples and hands on experience that will build understanding, excitement, and the confidence to embrace the future.

REGISTER NOW

No cost  
to attend.



Sponsored by  
STIFEL



**GASPER**  
INVESTMENT CONSULTING GROUP

Gordon Ford College of Business  
**PROFESSIONALISM WEEK**  
**October 20th - 24th**

Online Seminars  
Workshops  
Networking Events  
Internship Fair

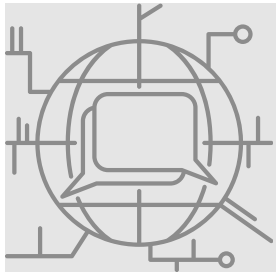


**Gordon Ford  
College of  
Business on  
Social Media:**

- [Facebook](#)
- [Instagram](#) (@wkugordonford)
- [X \(Twitter\)](#)
- [LinkedIn](#)







# CAMPUS CONNECTIONS

## IN THIS ISSUE:

- Spotlights on the Hill
  - Grad Fair, Advisor Meetings
- Upcoming Events
- Student Support Resources
- Campus Connections

## WKU Military Student Services Events

### Heroes on the Hill:

October 10<sup>th</sup> - October 11<sup>th</sup>

Join Western Kentucky University and The Mary E. Hensley Lecture Series for an inspiring two-day event celebrating courage, determination, and the love of the game. We are honored to host the **Louisville Slugger Warriors**, the world's first and only amputee baseball team. Check out the calendar of events [here](#).



## Military Student Services on Social Media:

[Facebook](#) - [X \(Twitter\)](#)

### Fort Campbell Education Fair:

October 15<sup>th</sup>, 10:00am-3:00pm

SSG Glenn H. English Education Center  
Fort Campbell KY

### Stress Management Workshop:

October 21<sup>st</sup>

Veteran Resource Center Lounge  
Gary Ransdell Hall 2066

VIRTUAL CHAT  
with DEAN BROWN



[Register now](#) for an online "Patio Chat" with PCAL's Dean, Dr. Terrance Brown. Complete the link below to set up a meeting virtually to discuss your unique experience as an online student, ask questions about PCAL programs, and get to know the Dean.



**Potter College of Arts and Letters on Social Media:**

- [Facebook](#)
- [Instagram](#) /@wkupcal
- [DIVERSITY Instagram](#)
- [YouTube](#)
- [TikTok](#): @wkuartsandletters

## Potter College Events:

### PCAL's Annual Fall Festival

Thursday, October 23<sup>rd</sup> at FAC

Check out more events by accessing the [PCAL event calendar](#).

**FORT CAMPBELL**  
**2025 EDUCATION FAIR**

**AIM HIGHER**

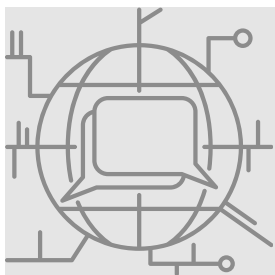
**START YOUR COLLEGE JOURNEY**  
**CONNECT WITH COLLEGES AND SHAPE YOUR FUTURE AT OUR EDUCATION FAIR.**

**MUSIC & FOOD**

**SSG GLENN H. ENGLISH ARMY EDUCATION CENTER**  
**OCTOBER 15TH**  
**1000-1500**

**202 BASTOGNE AVE.**  
**FORT CAMPBELL, KY 42223**





# CAMPUS CONNECTIONS

## IN THIS ISSUE:

- Spotlights on the Hill
  - Grad Fair, Advisor Meetings
- Upcoming Events
- Student Support Resources
- Campus Connections

### Literary Ambassadors

- Scholastic Book Fair
  - October 13-17, Student Success Center
- Book deliveries to local kids
  - meeting on October 20, 4:30, GRH 1089



### Ogden College of Science and Engineering on Social Media:

- [Facebook](#)
- [Instagram](#) /@wkusogdencollege
- [X \(Twitter\)](#)
- [YouTube](#)
- [LinkedIn](#)

## OSCE Resource Links:

- **Calculator Rental Program**
- **Ogden College Student Technology Information**
- **Tutoring:**
  - Chemistry Help Center
  - Computer Science Tutoring Center
  - Math Tutoring Lab
  - Physics and Help Center

**College of Education and Behavioral Sciences on Social Media:**

- [Facebook](#)
- [Instagram](#) / @wkucebs
- [X \(Twitter\)](#)
- [YouTube](#)
- TikTok: @wkucebs

**EXHIBITION**

SATURDAY OCT 11 | 1 PM CT | NICK DENES FIELD | BOWLING GREEN, KY

FREE ADMISSION // RESERVED AND VIP SEATS AVAILABLE FOR PURCHASE

PROCEEDS SUPPORT WKU SCHOLARSHIPS AND LOCAL YOUTH BASEBALL

**College of Health and Human Services on Social Media:**

Department of Social Work:

- [Facebook](#)
- [Instagram](#) /@wkusocialwork
- [X \(Twitter\)](#)
- [YouTube](#)
- [LinkedIn](#)

