

## WKU Bands – Fall 2025 Audition Guidelines

### TRUMPET

#### Scales :

Chromatic – play minimum of two octaves in 8<sup>th</sup> notes at 80bpm or faster.

B-flat major scale – Two octaves in 8<sup>th</sup> notes at a tempo of 80bpm or faster.

A major scale - Two octaves in 8<sup>th</sup> notes at a tempo of 80bpm or faster.

#### Required Excerpts:

**See attached Symphonic Band Audition Excerpts for Trumpet.**

(Note: students receiving a Music Grant are **required** to prepare the Symphonic Band Audition Excerpts **AND** the Orchestra excerpts. Placement in the Orchestra is determined through the Symphonic Band Auditions. The TOP players in the Symphonic Band are also seated in the Orchestra.

All audition materials will be video recorded and then uploaded to YouTube as an unlisted (private) video. Students will then share the link to their unlisted YouTube video with the Music Faculty through the WKU Bands Audition link which will be provided in early August. All audition videos must be completed, and the link submitted **before 11:59 pm CST on Thursday, August 14**. It is highly recommended that students in the Big Red Marching Band practice and record their audition videos BEFORE BRMB Band Camp. Finding time during Band Camp is difficult and when you have free time, you may be too tired to record a quality audition.

Instructions for uploading an unlisted video on YouTube will be shared with the information about the link in early August.

To the Blue Lake Fine Arts Camp  
**BLUE LAKE**  
Overture for Concert Band

1882

1st B $\flat$  Trumpet

John Barnes Chance

*Slancio*

3

div.

ff

unis.

2

13

3

*sffp*

div.

ff

unis.

div.

ff sempre

26

18

45

12

57

3

2

(+ Tubas)

(+ Horns)

Hns.

*f*

2

*poco allargando*

*ff*

*Alla valzer*

9

*poco più mosso*

8

8

89

(+ Oboes)

div.

100

3

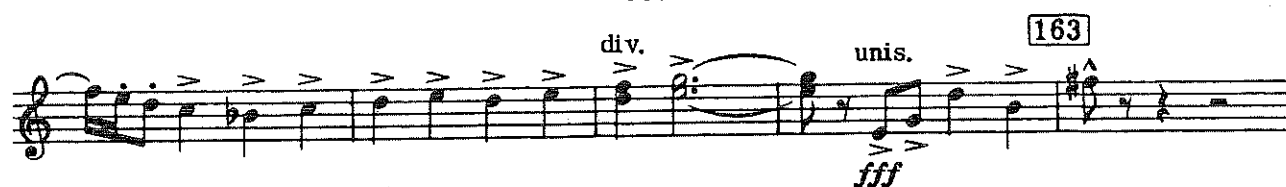
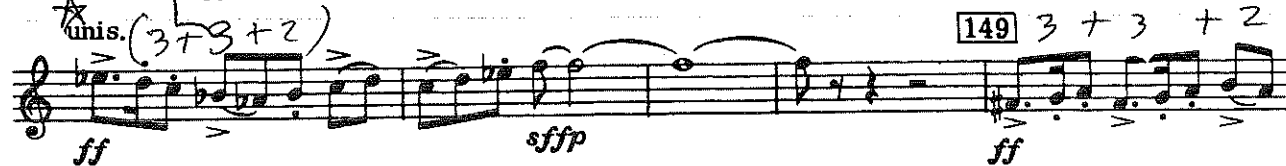
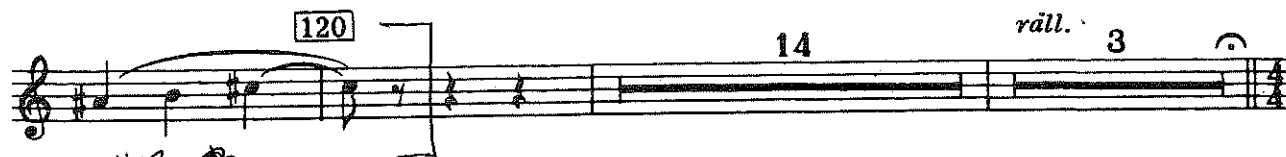
#1

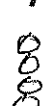
unis.

*ff sostenuto*

1st B $\flat$  Trumpet

3



★ = Think  meter in 3

Q. M. B. 372