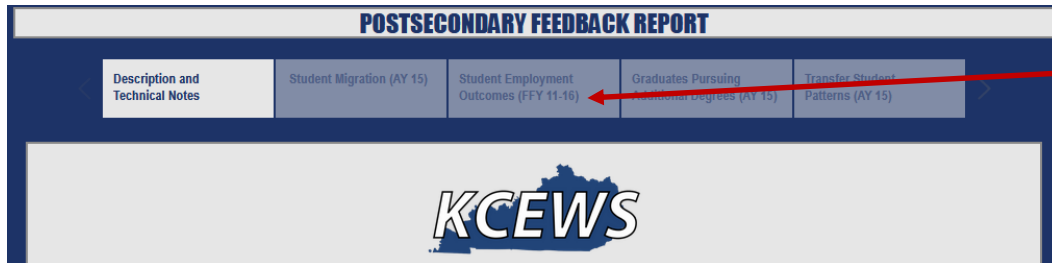


## Navigating the Postsecondary Feedback Report (CAPE Section 3.c)

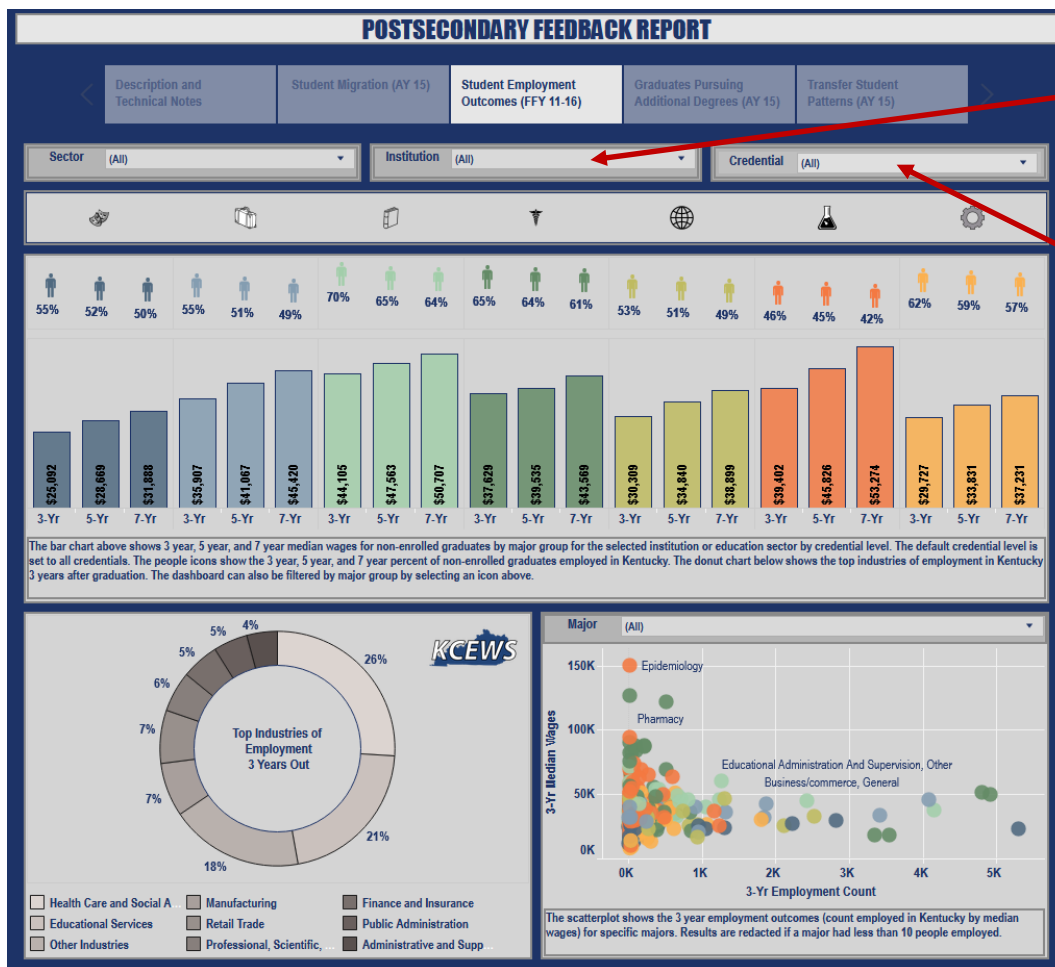
The narrative prompt in Section 3.c of the CAPE Program Self-Study Template asks programs to discuss the success of graduates in gaining employment, and includes an embedded link to an interactive report produced by the Kentucky Center for Statistics. This Postsecondary Feedback Report provides data on percent of graduates employed in Kentucky and median salaries 3-7 years out.

After following the link provided on the Worksheet, use the following guide to generate data for your program(s).



Click on  
'Student  
Employment  
Outcomes'

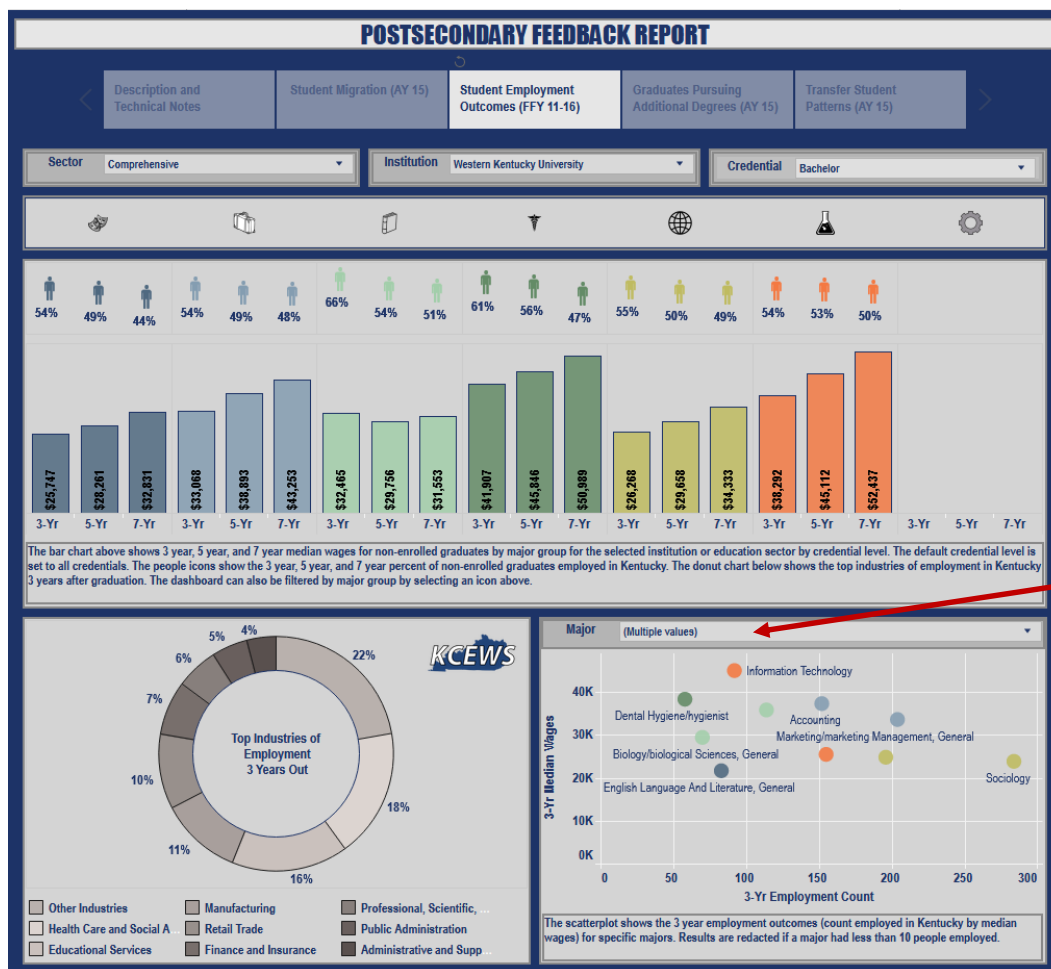
The Report will then allow you to choose your institution (WKU) and one or more credential level (associate, baccalaureate, etc.).



Choose WKU

Choose  
Credential  
Level(s)

Once you choose WKU and the credential level(s) of interest, the Report will update to include only those degree programs offered at WKU. You can then narrow down the data reported to specific major programs (by 2-digit CIP code). The screenshot below shows a representative set of WKU programs.



Choose specific major areas

When you roll over an arrow on the Report graph, the specific data for major area will be shown, as below.

